

STOREYS

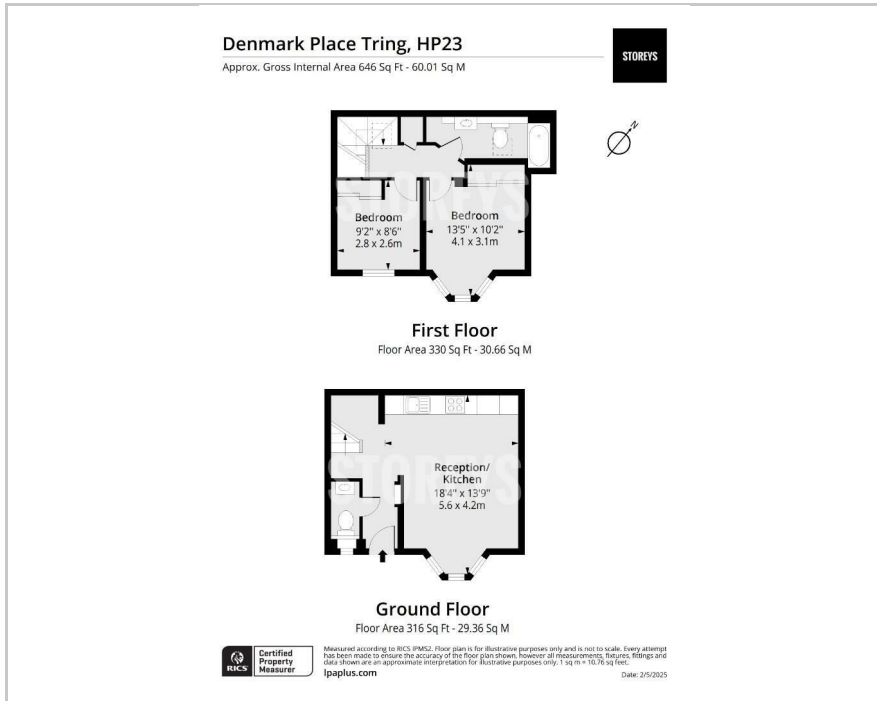


10 Denmark Place, Tring, HP23 6FE
£1,750 Per month

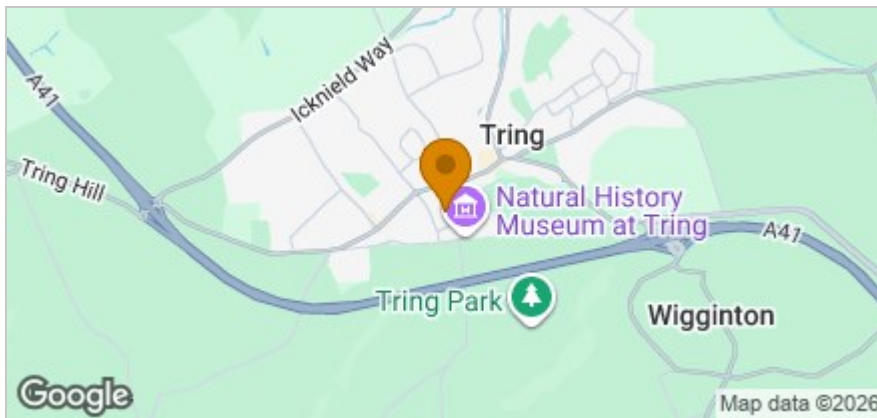


STOREYS

Floor Plan



Area Map



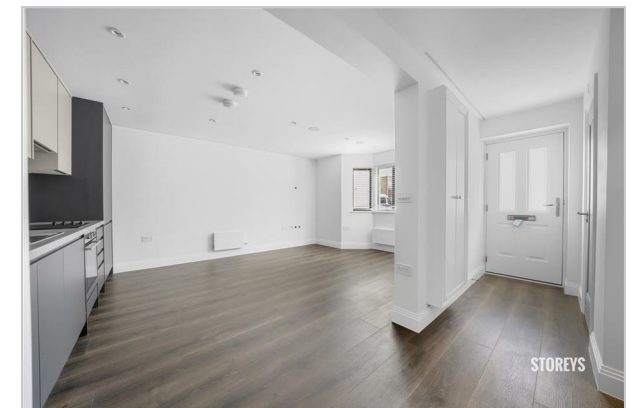
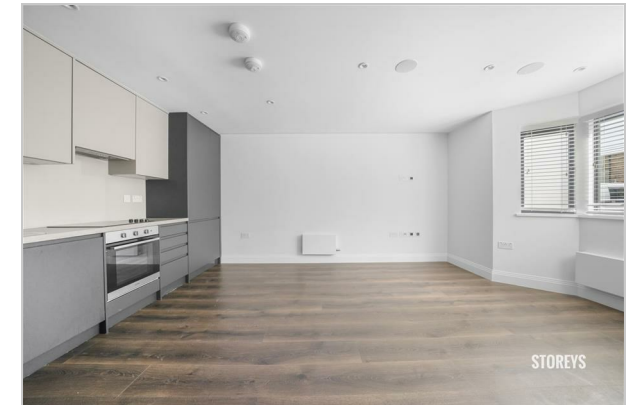
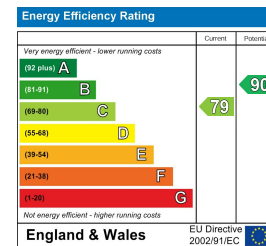
Accommodation

- Newly Built Terrace House
- Parking Space
- Historic Market Town
- Tring Station
- Walking Distance To High Street
- Tring School
- Two Double Bedrooms
- Open Plan Living Space
- Guest W.C
- Sleek & Stylish Finish Throughout

Viewing

Please contact our Storeys of London Office on 0207-096-0666 if you wish to arrange a viewing appointment for this property or require further information.

Energy Efficiency Graph



These particulars, whilst believed to be accurate are set out as a general outline only for guidance and do not constitute any part of an offer or contract. Intending purchasers should not rely on them as statements of representation of fact, but must satisfy themselves by inspection or otherwise as to their accuracy. No person in this firm's employment has the authority to make or give any representation or warranty in respect of the property.