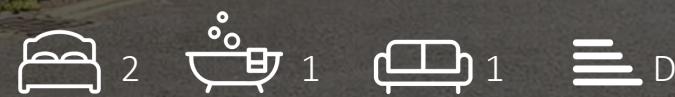


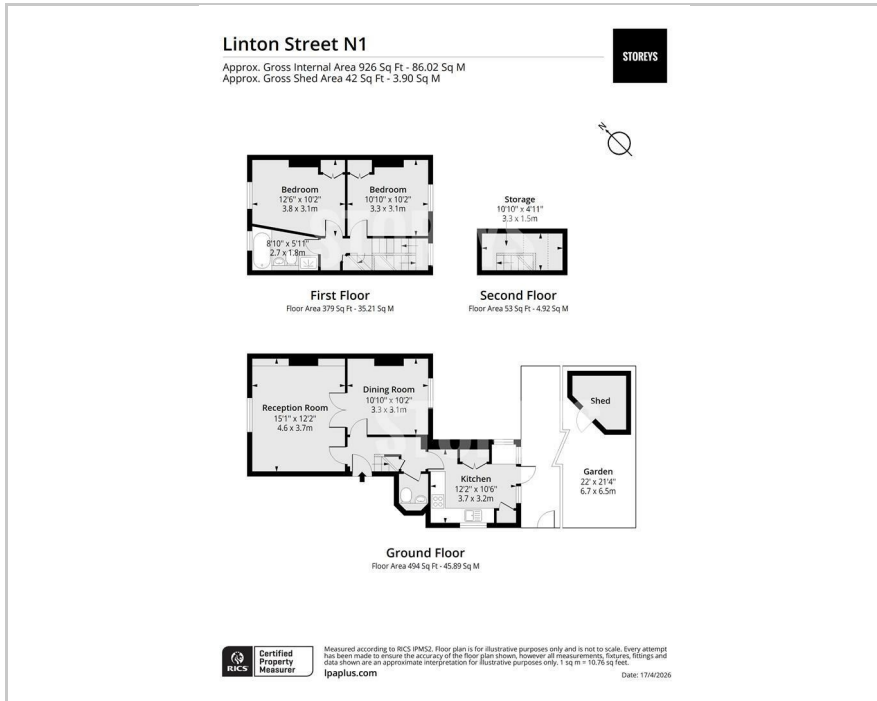
STOREYS



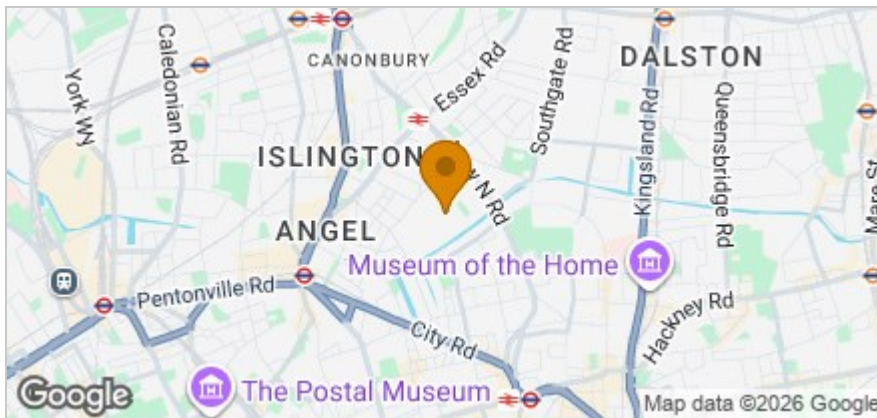
24 Linton Street, Islington, N1 7DX
Guide price £1,250,000



Floor Plan



Area Map



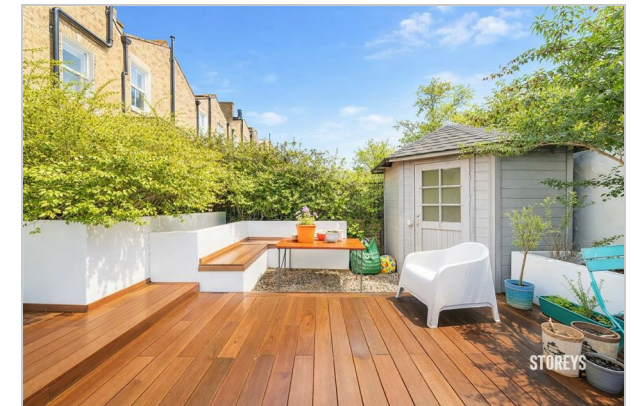
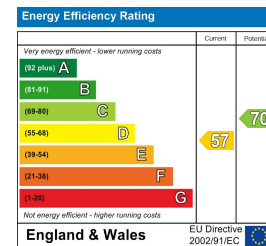
Accommodation

- Arlington Conservation Area
- Beautifully decked Courtyard Garden
- Large Sash Windows
- Boutique Shops, Cafés, & Restaurants Of Upper Street
- Separate Eat-In Kitchen
- Picturesque Views Of Union Square Gardens
- Side Access (Via Courtyard Garden)
- Chain Free
- Guest W.C
- Angel & Old Street Stations

Viewing

Please contact our Hackney Let Only Office on if you wish to arrange a viewing appointment for this property or require further information.

Energy Efficiency Graph



These particulars, whilst believed to be accurate are set out as a general outline only for guidance and do not constitute any part of an offer or contract. Intending purchasers should not rely on them as statements of representation of fact, but must satisfy themselves by inspection or otherwise as to their accuracy. No person in this firm's employment has the authority to make or give any representation or warranty in respect of the property.