

**STOREYS**

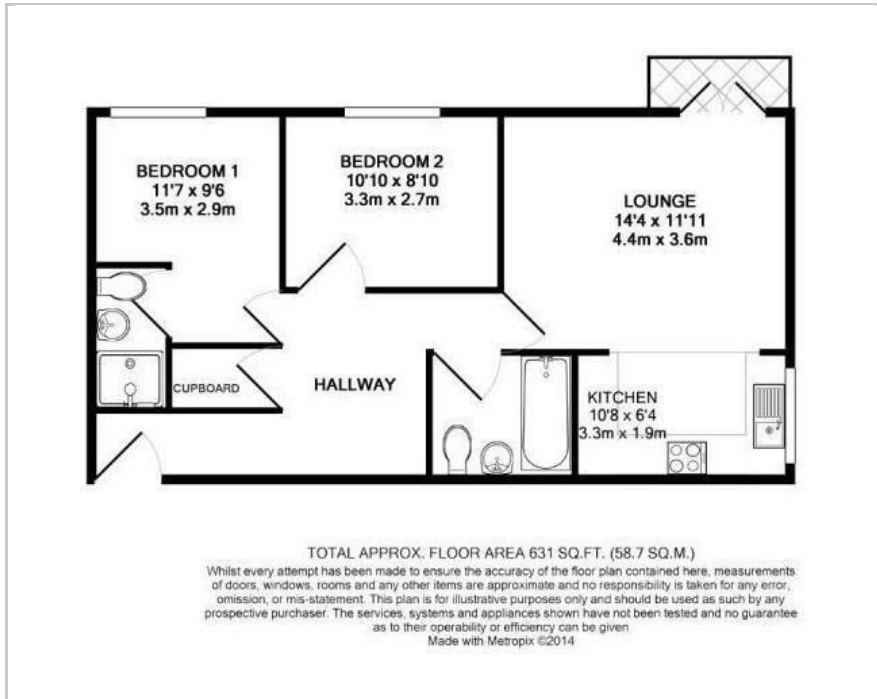


8 Hepburn Court Station Road, Borehamwood, WD6 1GR

£1,550 Per month

2 2 1 B

## Floor Plan



## Area Map



These particulars, whilst believed to be accurate are set out as a general outline only for guidance and do not constitute any part of an offer or contract. Intending purchasers should not rely on them as statements of representation of fact, but must satisfy themselves by inspection or otherwise as to their accuracy. No person in this firm's employment has the authority to make or give any representation or warranty in respect of the property.

77 Containerville 1 Emma Street, Bethnal Green, E2 9FP  
Tel: 0207-096-0666 Email: [lettings@storeys.co](mailto:lettings@storeys.co) <https://www.storeys.co/>

## Accommodation

- Two Double Bedrooms
- Elstree & Borehamwood Station (Thameslink)
- One Allocated Parking Space (Option For Guest Parking)
- Open Plan Living Space
- First Floor Apartment (Lift Facilities)
- Two Bathrooms (En-Suite To Master Bedroom)
- Naturally Bright & Airy
- Balcony
- Two Bathrooms

## Viewing

Please contact our Storeys of London Office on 0207-096-0666 if you wish to arrange a viewing appointment for this property or require further information.

## Energy Efficiency Graph

