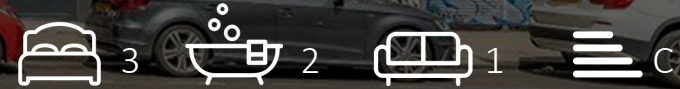


STOREYS

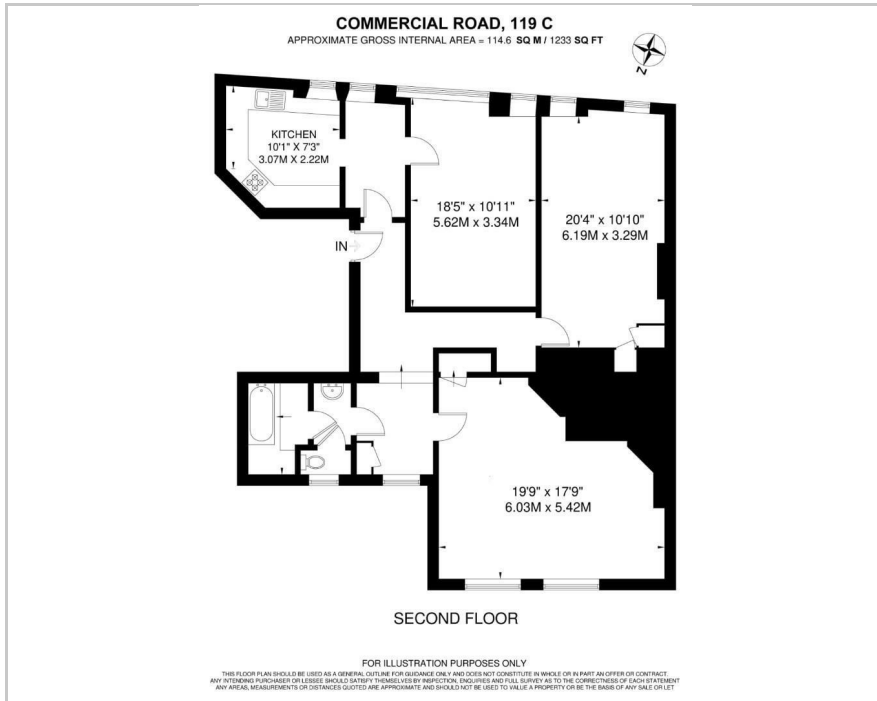


119 Commercial Road, London, E1 1RD

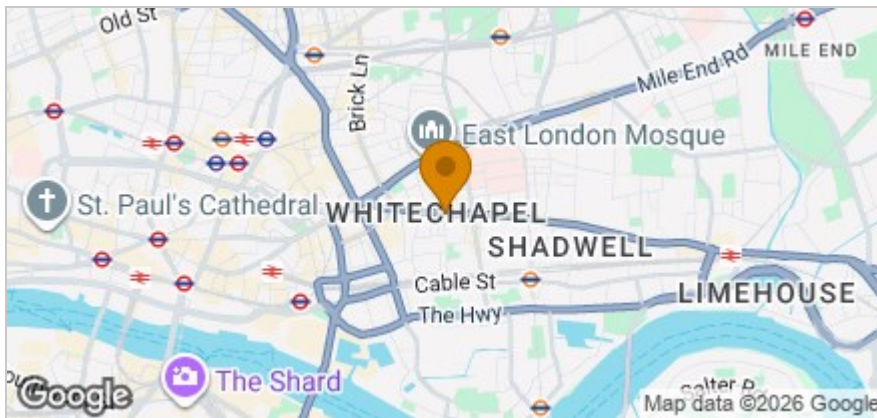
£3,500 Per month



Floor Plan



Area Map



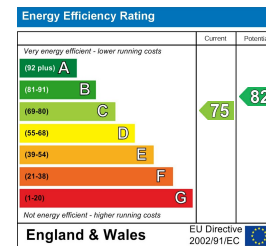
Accommodation

- 1233 Sq. Ft Living Space.
- Great Location.
- Whitechapel Station.
- Modern Bathroom.
- Solid Wood Flooring.
- Open Plan Kitchen.
- Naturally Bright and Airy.
- Walk Into City.
- Brick Lane of Shoreditch.
- Three Double Bedrooms.

Viewing

Please contact our Storeys of London Office on 0207-096-0666 if you wish to arrange a viewing appointment for this property or require further information.

Energy Efficiency Graph



These particulars, whilst believed to be accurate are set out as a general outline only for guidance and do not constitute any part of an offer or contract. Intending purchasers should not rely on them as statements of representation of fact, but must satisfy themselves by inspection or otherwise as to their accuracy. No person in this firm's employment has the authority to make or give any representation or warranty in respect of the property.

77 Containerville 1 Emma Street, Bethnal Green, E2 9FP

Tel: 0207-096-0666 Email: lettings@storeys.co <https://www.storeys.co/>