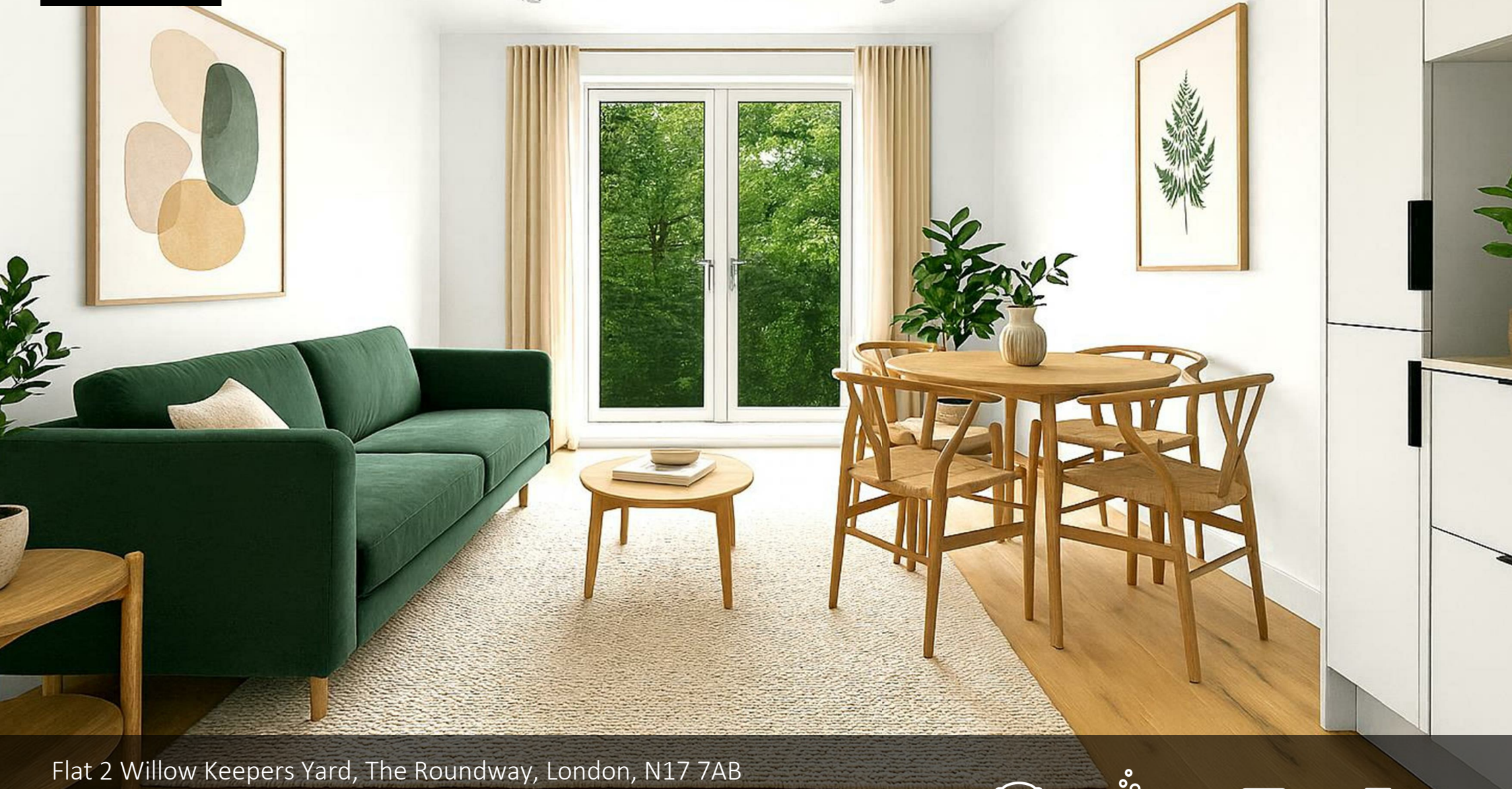
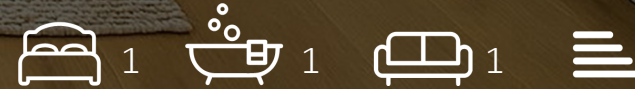


STOREYS

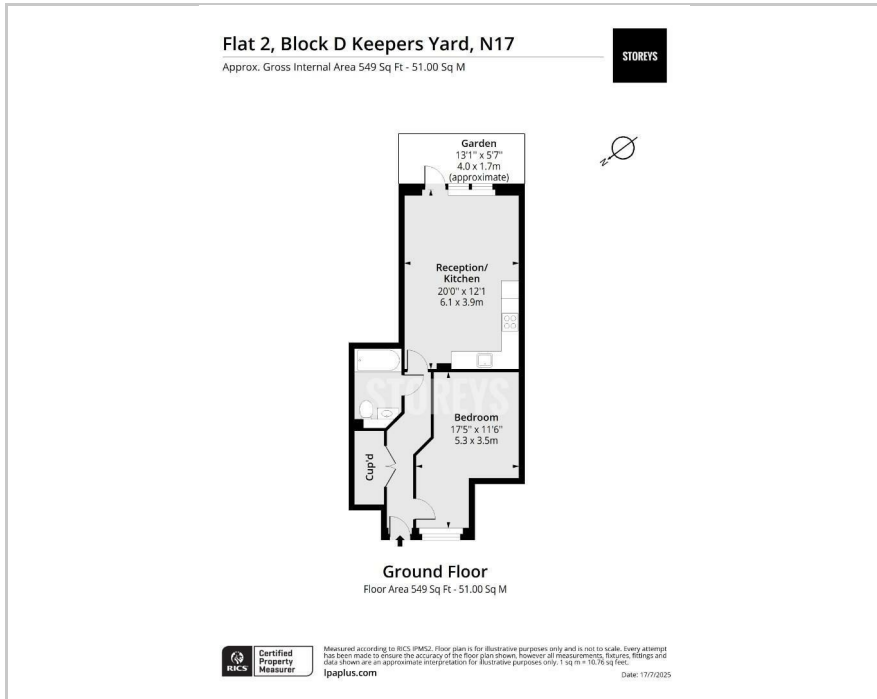


Flat 2 Willow Keepers Yard, The Roundway, London, N17 7AB

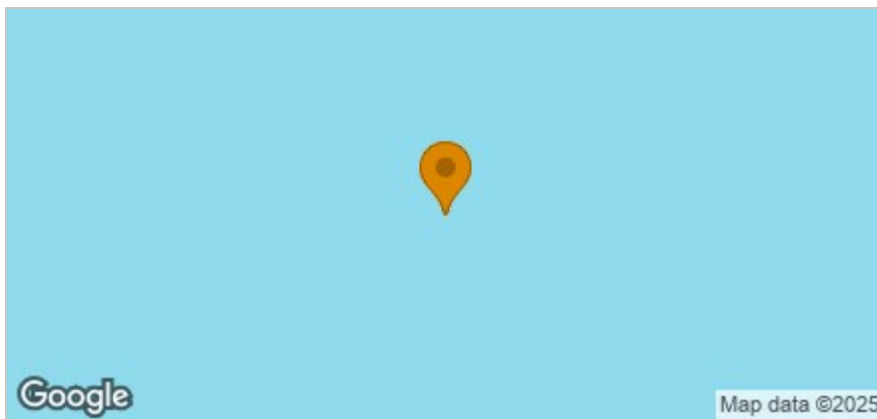
£2,000 Per month



Floor Plan



Area Map



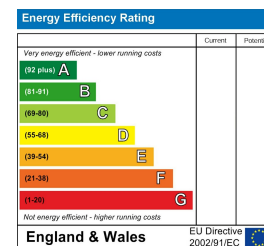
Accommodation

- New-Build
- 10 Minutes to Bruce Grove Station
- Patio Courtyard
- Open Plan Living Space
- Bruce Castle Park
- Communal Roof Terrace
- Eateries & Coffee Shops
- Underfloor Heating
- Seven Sisters For The Victoria Line
- Students Welcome

Viewing

Please contact our Storeys of London Office on 0207-096-0666 if you wish to arrange a viewing appointment for this property or require further information.

Energy Efficiency Graph



These particulars, whilst believed to be accurate are set out as a general outline only for guidance and do not constitute any part of an offer or contract. Intending purchasers should not rely on them as statements of representation of fact, but must satisfy themselves by inspection or otherwise as to their accuracy. No person in this firm's employment has the authority to make or give any representation or warranty in respect of the property.

77 Containerville 1 Emma Street, Bethnal Green, E2 9FP

Tel: 0207-096-0666 Email: lettings@storeys.co <https://www.storeys.co/>