

STOREYS

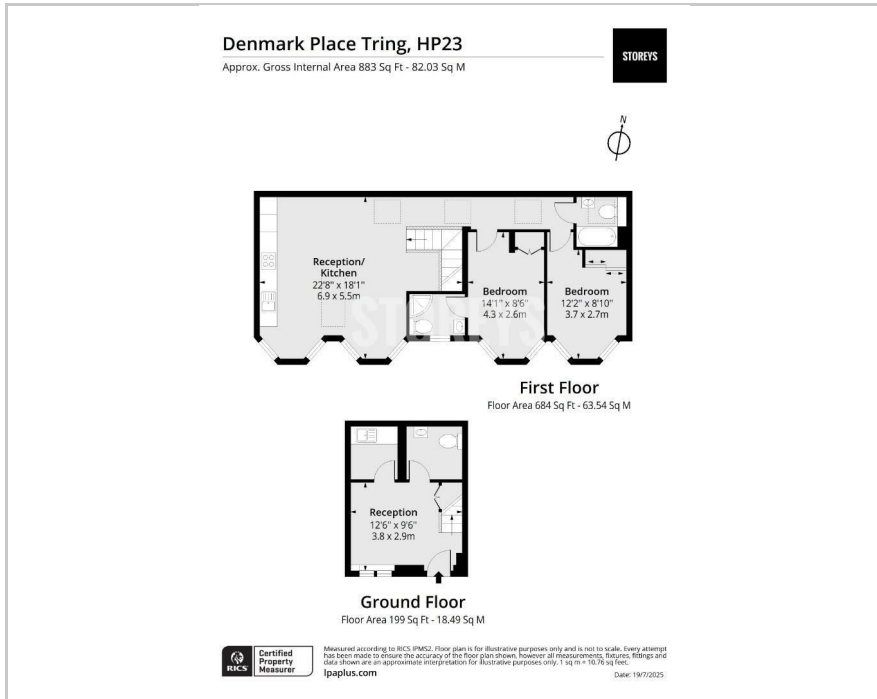


2 Denmark Place, Tring, HP23 6FE
£1,650 Per month

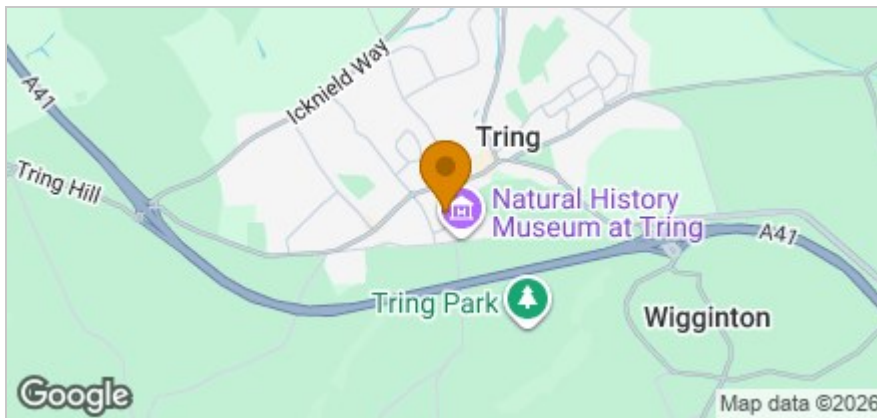
STOREYS



Floor Plan



Area Map



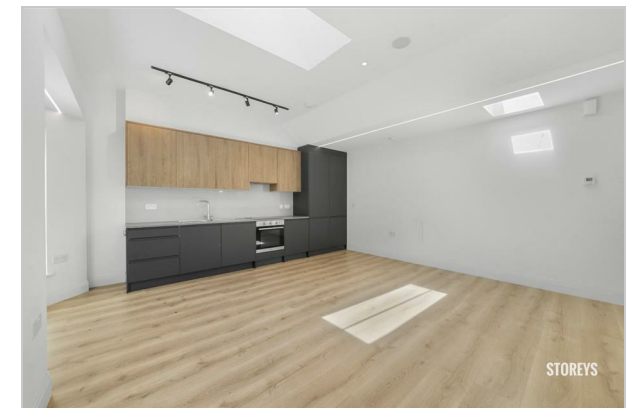
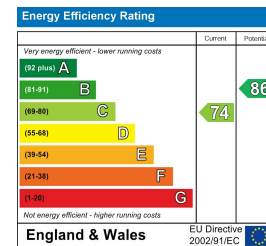
Accommodation

- Newly Built Terrace House
- Historic Market Town
- Walking Distance To High Street
- Two Double Bedrooms
- Private Parking Space
- Tring Station
- Tring School
- En-Suite
- Sleek & Stylish Finish Throughout.
- 2 Weeks Rent Free

Viewing

Please contact our Storeys of London Office on 0207-096-0666 if you wish to arrange a viewing appointment for this property or require further information.

Energy Efficiency Graph



These particulars, whilst believed to be accurate are set out as a general outline only for guidance and do not constitute any part of an offer or contract. Intending purchasers should not rely on them as statements of representation of fact, but must satisfy themselves by inspection or otherwise as to their accuracy. No person in this firm's employment has the authority to make or give any representation or warranty in respect of the property.