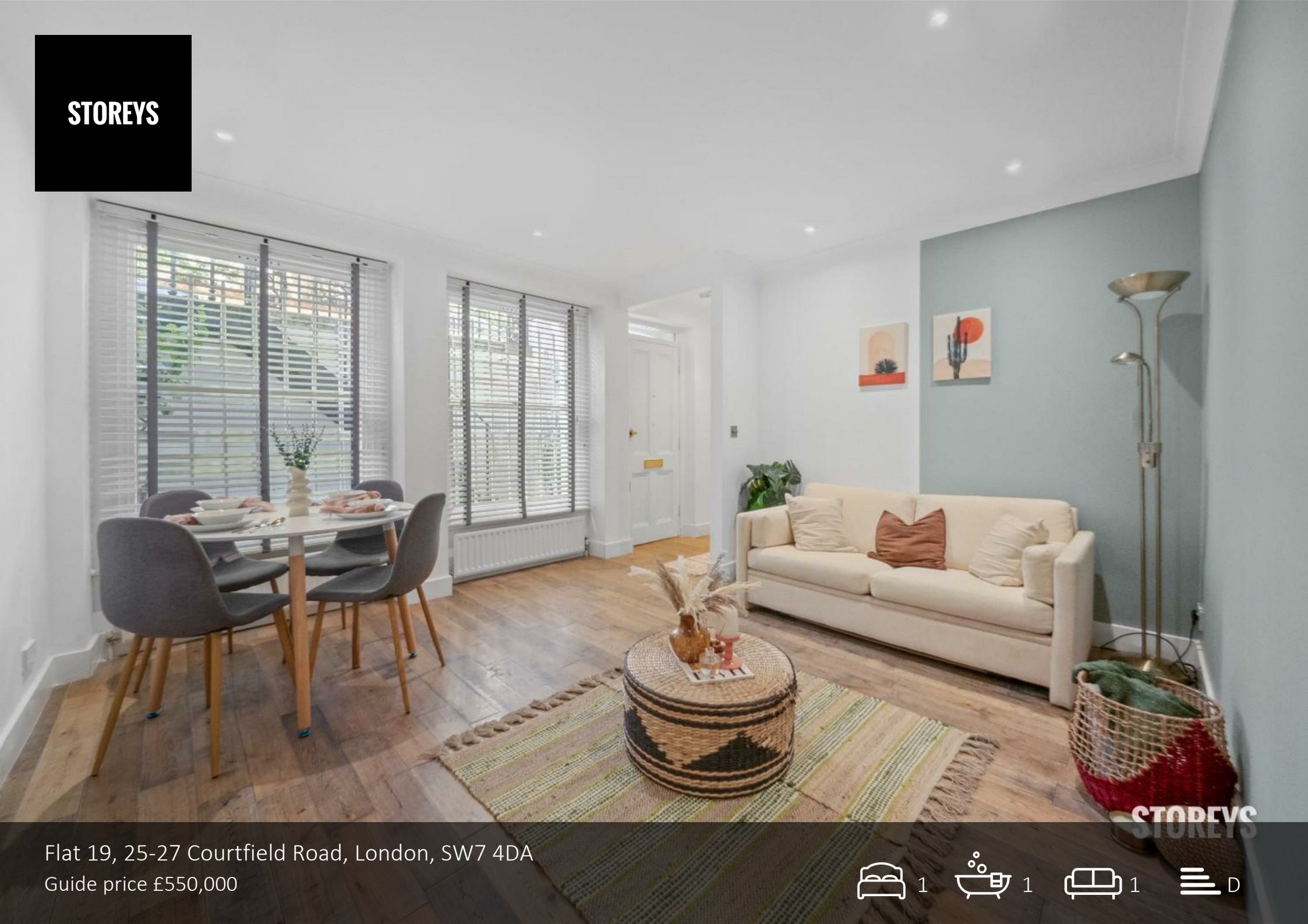
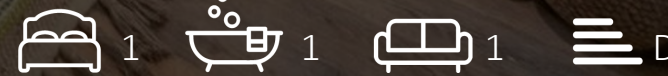


STOREYS



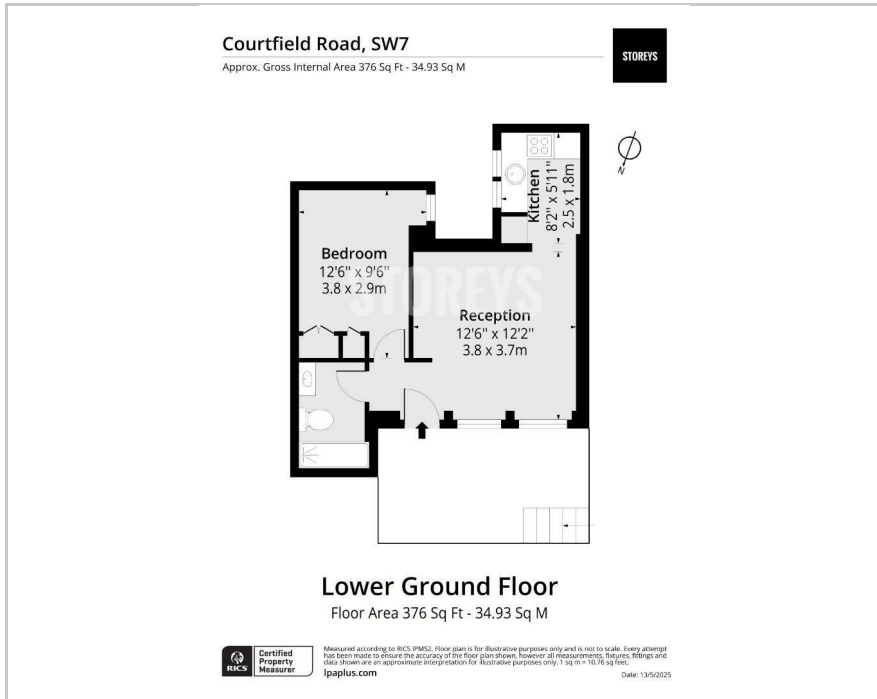
Flat 19, 25-27 Courtfield Road, London, SW7 4DA

Guide price £550,000

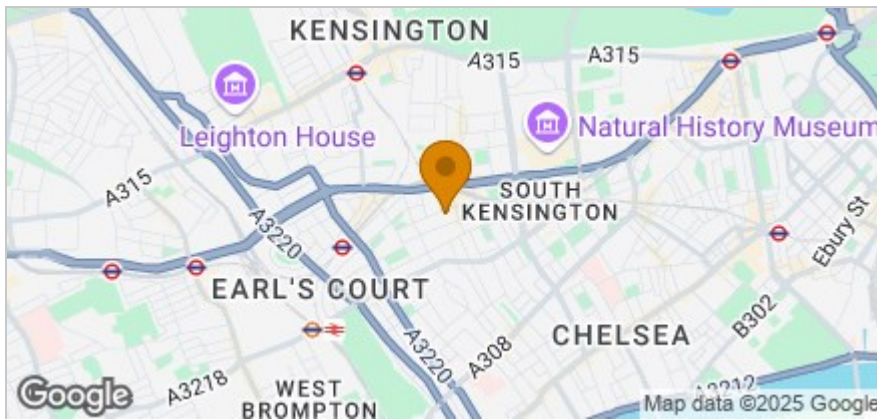


STOREYS

Floor Plan



Area Map



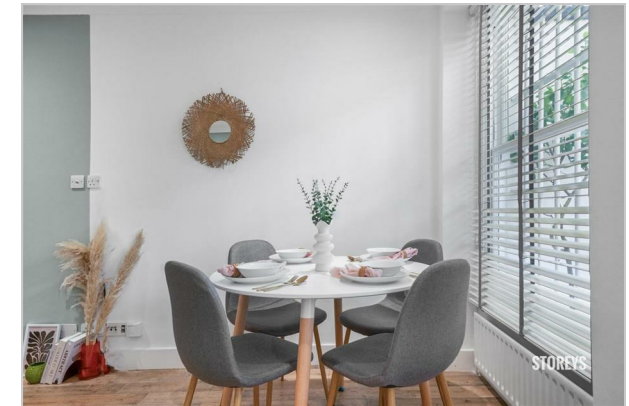
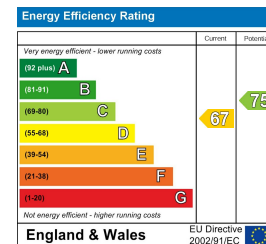
Accommodation

- Period Conversion
- Chain Free
- Envious Location
- Gloucester Road Station
- Share Of Freehold
- Stylish And Modern
- Patio
- One Bedroom
- Hyde Park
- National History Museum

Viewing

Please contact our Storeys of London Office on 0207-096-0666 if you wish to arrange a viewing appointment for this property or require further information.

Energy Efficiency Graph



These particulars, whilst believed to be accurate are set out as a general outline only for guidance and do not constitute any part of an offer or contract. Intending purchasers should not rely on them as statements of representation of fact, but must satisfy themselves by inspection or otherwise as to their accuracy. No person in this firm's employment has the authority to make or give any representation or warranty in respect of the property.