

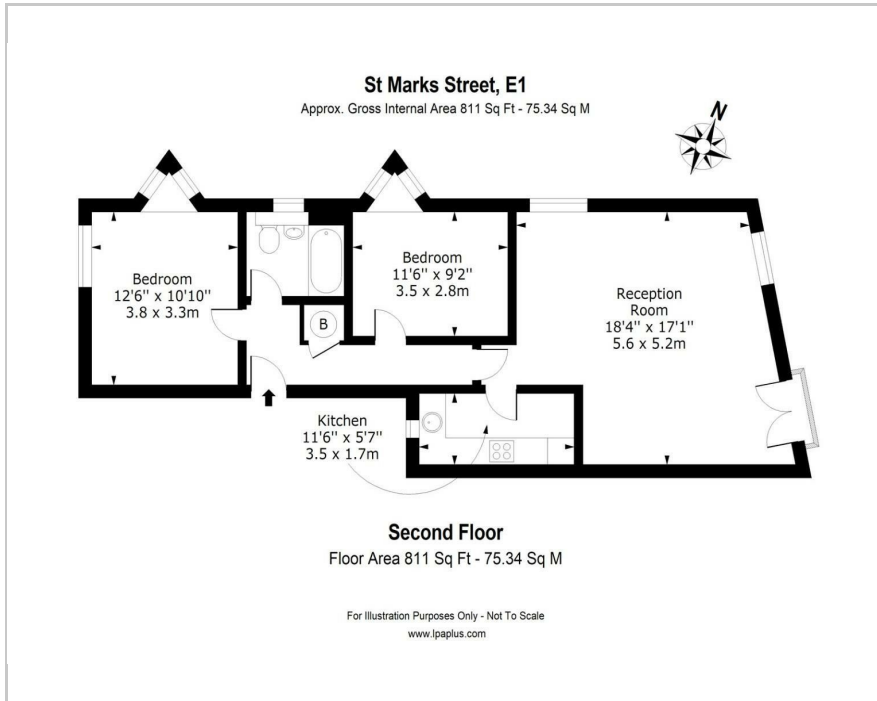
STOREYS

Flat 13 27 St. Mark Street, London, E1 8EF
£2,500 Per month

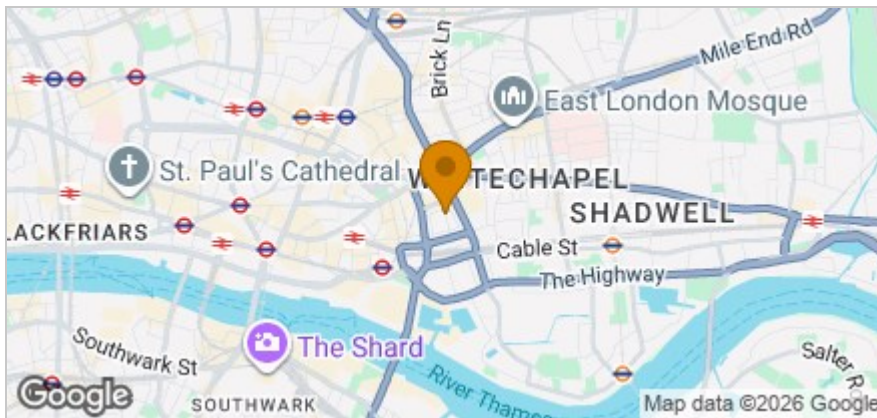


etnbeve

Floor Plan



Area Map



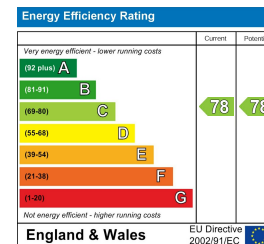
Accommodation

- Secure Modern Development
- Aldgate East Station
- Communal Roof Terrace (City Views)
- Two Double Bedrooms
- Second Floor Apartment
- Lift Facilities
- Walk Into The City
- Shoreditch & Brick Lane
- Naturally Bright & Airy
- Concierge Service

Viewing

Please contact our Storeys of London Office on 0207-096-0666 if you wish to arrange a viewing appointment for this property or require further information.

Energy Efficiency Graph



These particulars, whilst believed to be accurate are set out as a general outline only for guidance and do not constitute any part of an offer or contract. Intending purchasers should not rely on them as statements of representation of fact, but must satisfy themselves by inspection or otherwise as to their accuracy. No person in this firm's employment has the authority to make or give any representation or warranty in respect of the property.