

STOREYS



30 Hoffman Square Chart Street, London, N1 6DH

£1,900 Per month

STOREYS



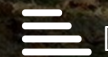
1



null

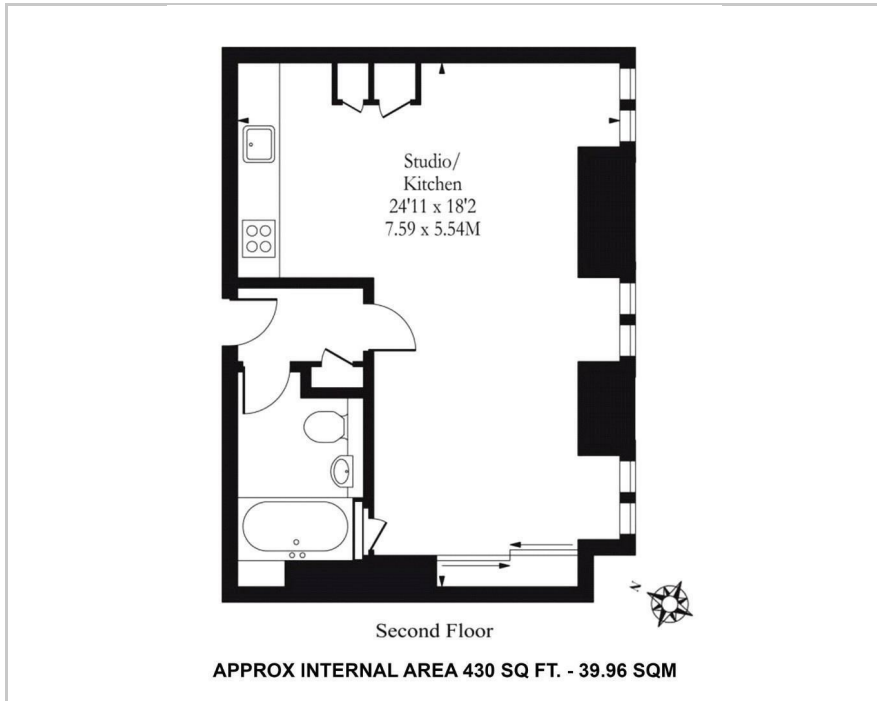


1

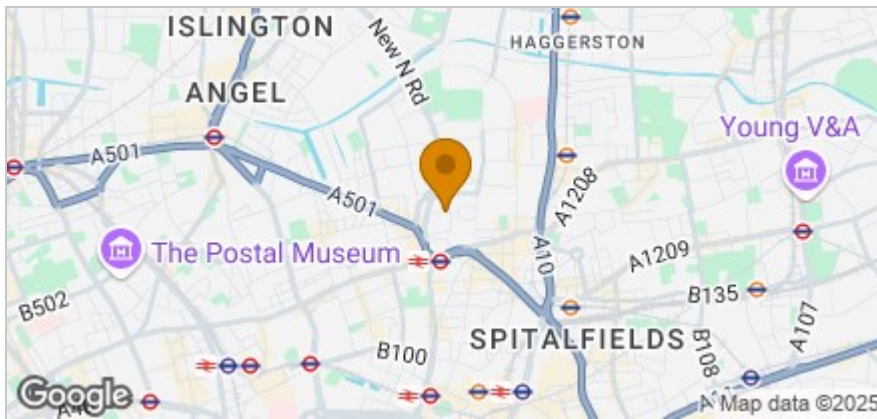


D

## Floor Plan



## Area Map



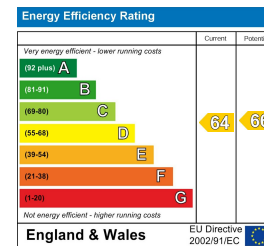
## Accommodation

- Fantastic Studio Apartment
- 450 sq. ft Approx.
- Top Floor
- Stunning Grade II Listed Building
- School Conversion
- Immaculately Presented
- Secure Gated Private Development
- Just Off Hoxton Square
- Stone's Throw Of Old Street & Shoreditch & City
- Naturally Bright & Airy

## Viewing

Please contact our Storeys of London Office on 0207-096-0666 if you wish to arrange a viewing appointment for this property or require further information.

## Energy Efficiency Graph



These particulars, whilst believed to be accurate are set out as a general outline only for guidance and do not constitute any part of an offer or contract. Intending purchasers should not rely on them as statements of representation of fact, but must satisfy themselves by inspection or otherwise as to their accuracy. No person in this firm's employment has the authority to make or give any representation or warranty in respect of the property.