

STOREYS

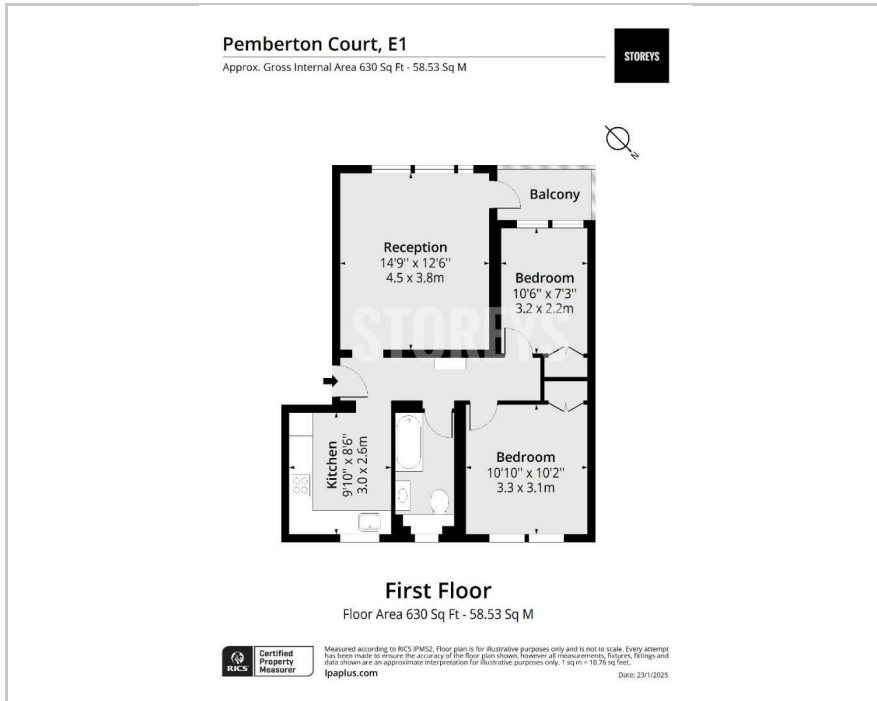


Flat 4, 39, Pemberton Court Portelet Road, London, E1 4EN  
£2,250 Per month

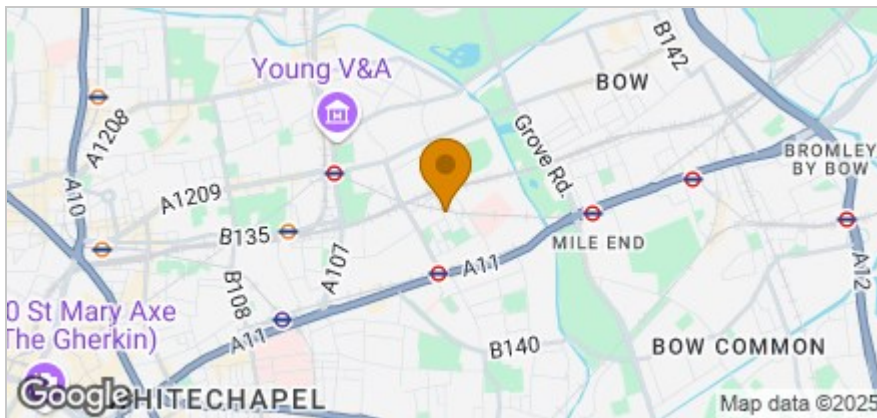
STOREYS

🛏️ 2 🚿 1 🛋️ 1 ☰ C

## Floor Plan



## Area Map



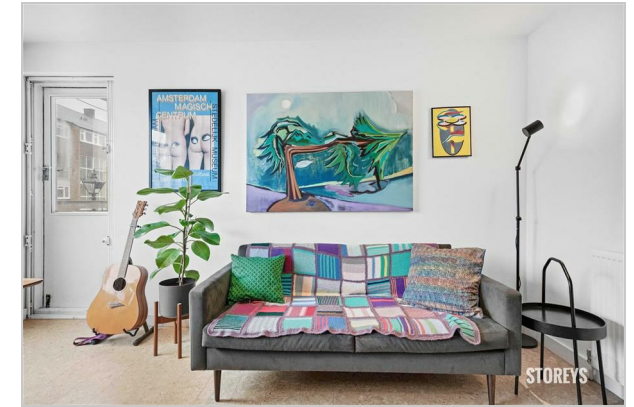
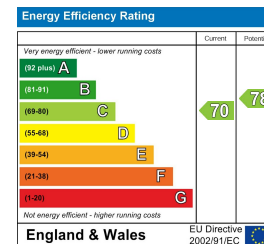
## Accommodation

- Perfect For Couples!
- Southwest Facing Balcony
- Sleek Cork Flooring
- Bespoke Eat-In Kitchen
- Newly Installed Bathroom
- Bethnal Green & Stepney Green Stations
- Retro Style Apartment
- Easy Access Into Shoreditch
- Victoria & Mile End Parks
- Please note some works will be taking place to the building, rent reduction will be offered.

## Viewing

Please contact our Storeys of London Office on 0207-096-0666 if you wish to arrange a viewing appointment for this property or require further information.

## Energy Efficiency Graph



These particulars, whilst believed to be accurate are set out as a general outline only for guidance and do not constitute any part of an offer or contract. Intending purchasers should not rely on them as statements of representation of fact, but must satisfy themselves by inspection or otherwise as to their accuracy. No person in this firm's employment has the authority to make or give any representation or warranty in respect of the property.