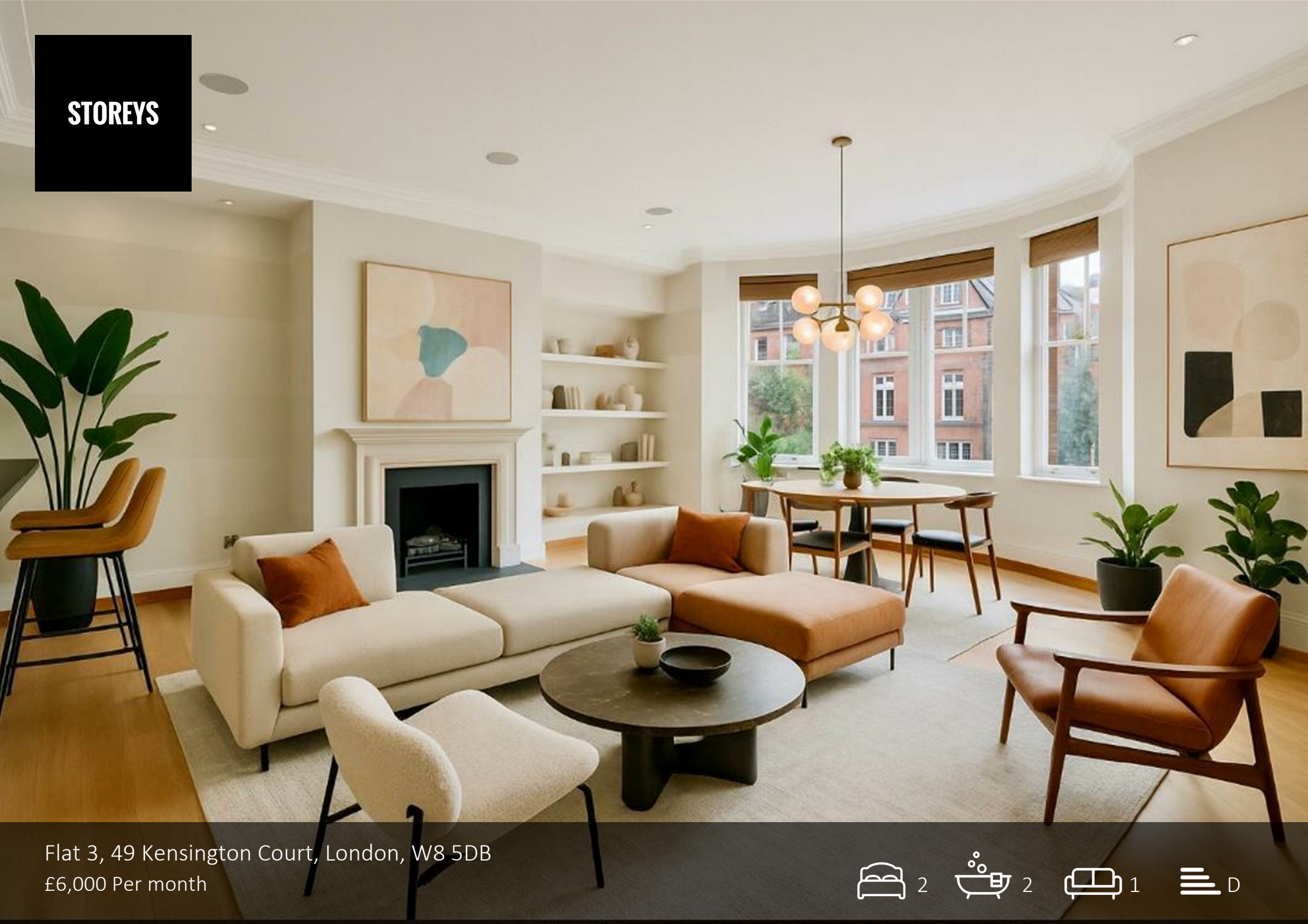
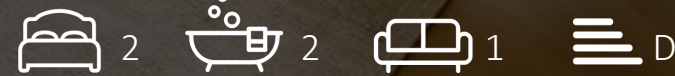


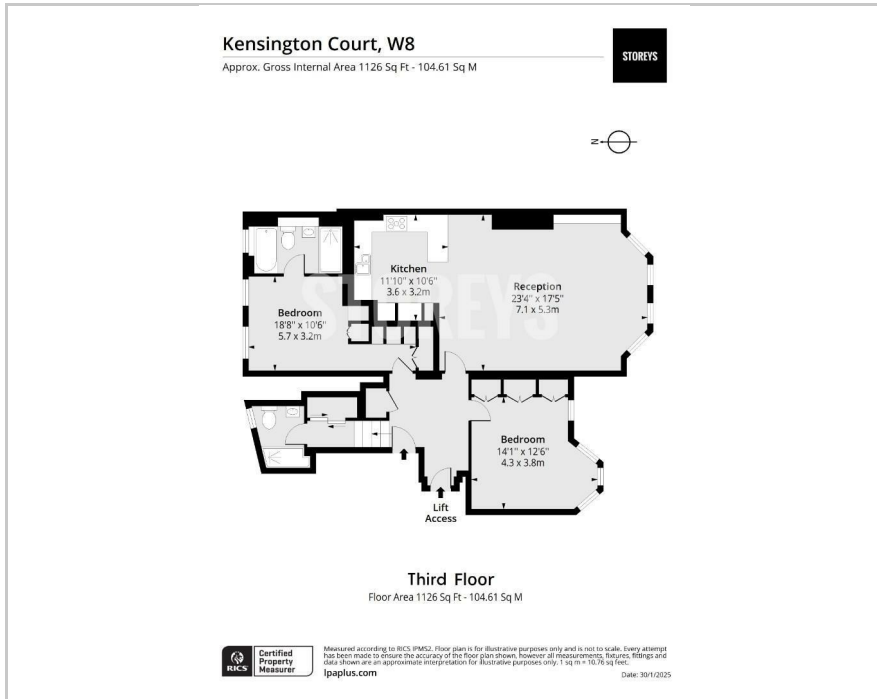
STOREYS



Flat 3, 49 Kensington Court, London, W8 5DB
£6,000 Per month



Floor Plan



Area Map



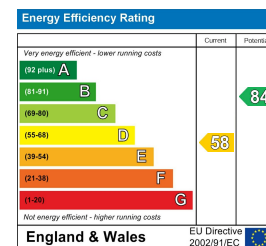
Accommodation

- 1100 Sq. ft Living Space
- Beautiful Red Brick Mansion Building
- One-Way Street
- Hyde Park & Holland Park
- Kensington Station
- Two Bathrooms
- On-Site Porter
- Lift Facilities
- Open Plan Living Space
- Bay Window & Feature Fireplace

Viewing

Please contact our Storeys of London Office on 0207-096-0666 if you wish to arrange a viewing appointment for this property or require further information.

Energy Efficiency Graph



These particulars, whilst believed to be accurate are set out as a general outline only for guidance and do not constitute any part of an offer or contract. Intending purchasers should not rely on them as statements of representation of fact, but must satisfy themselves by inspection or otherwise as to their accuracy. No person in this firm's employment has the authority to make or give any representation or warranty in respect of the property.