





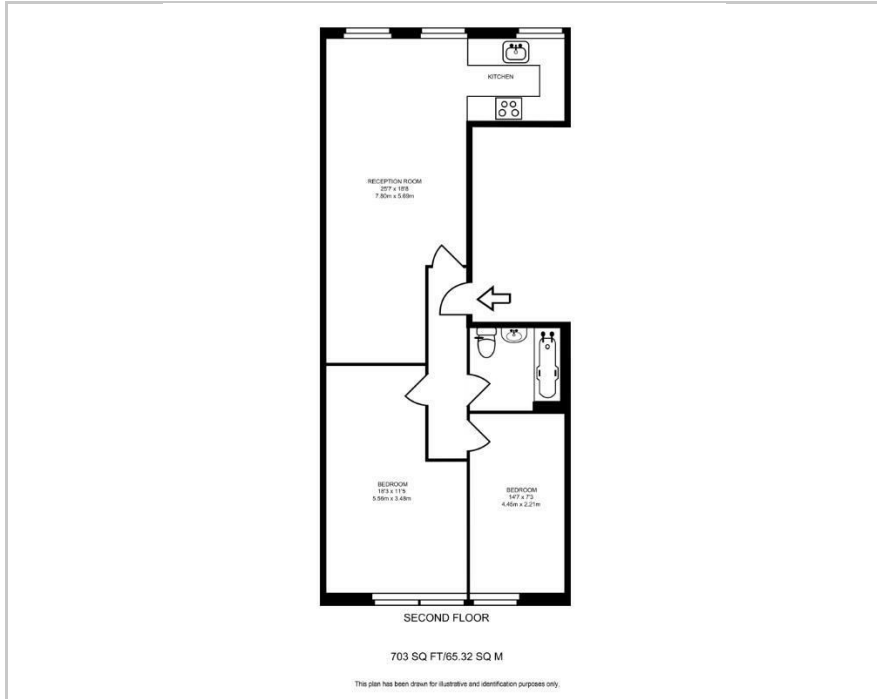
STOREYS



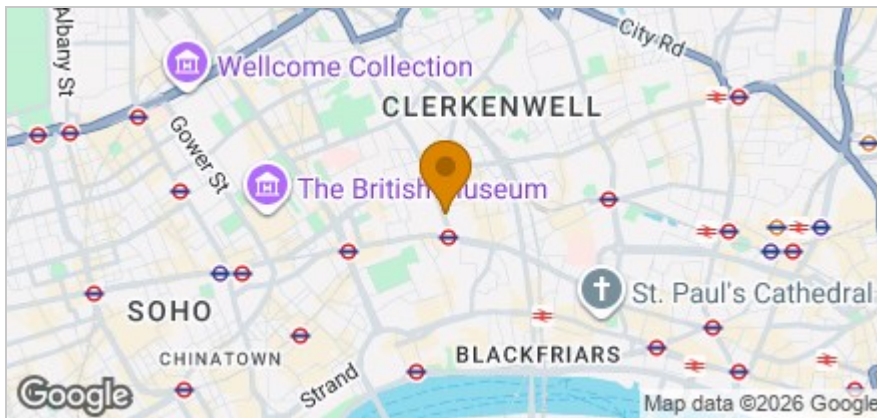
Flat 2, 40 Gray's Inn Road, London, WC1X 8LR
£3,700 Per month

 2  1  1  C

Floor Plan



Area Map



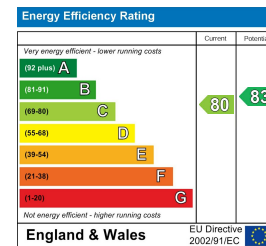
Accommodation

- Two Double Bedrooms
- UCL & Kings College
- Chancery Lane Station
- Open Plan Living Space
- Modern Kitchen
- High Ceilings & Wood Flooring
- Farringdon stations
- Local Amenities
- Kings Cross (Shops & Station)
- Furnished Apartment

Viewing

Please contact our Storeys of London Office on 0207-096-0666 if you wish to arrange a viewing appointment for this property or require further information.

Energy Efficiency Graph



These particulars, whilst believed to be accurate are set out as a general outline only for guidance and do not constitute any part of an offer or contract. Intending purchasers should not rely on them as statements of representation of fact, but must satisfy themselves by inspection or otherwise as to their accuracy. No person in this firm's employment has the authority to make or give any representation or warranty in respect of the property.

77 Containerville 1 Emma Street, Bethnal Green, E2 9FP

Tel: 0207-096-0666 Email: lettings@storeys.co <https://www.storeys.co/>