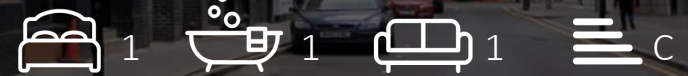


STOREYS

Flat 1, 14 Mallow Street, Islington, EC1Y 8RQ
£2,999 Per month

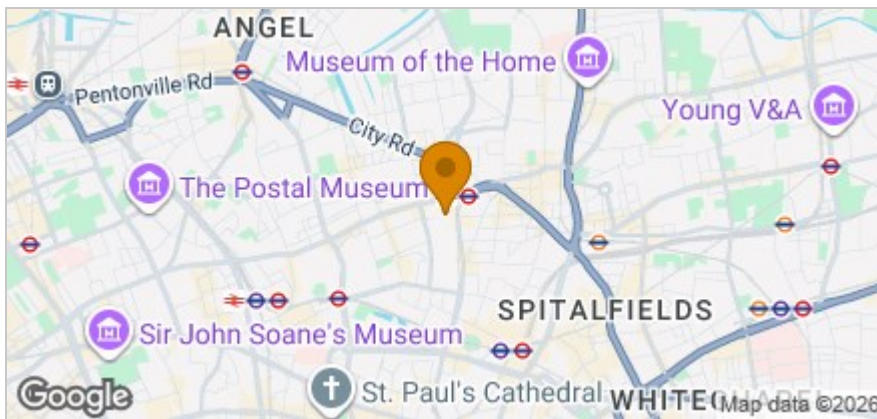


STOREYS

Floor Plan



Area Map



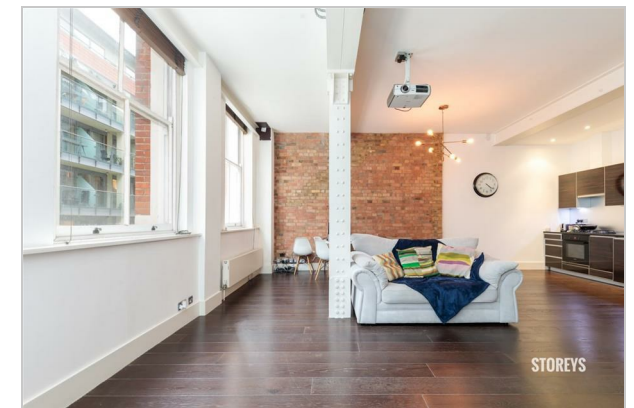
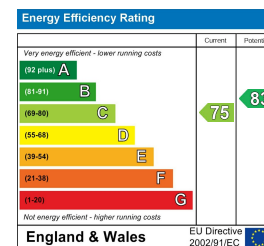
Accommodation

- Factory Conversion
- 1000 Sq. ft Living Space
- Large Sash Windows (Naturally Bright & Airy)
- Shoreditch On Your Doorstep
- Walk In Wardrobe
- Clerkenwell Location
- Exceptional High Ceilings
- Walk Into The City
- Old Street Tube Station
- Wet Room (Shower & Bath Tub)

Viewing

Please contact our Storeys of London Office on 0207-096-0666 if you wish to arrange a viewing appointment for this property or require further information.

Energy Efficiency Graph



These particulars, whilst believed to be accurate are set out as a general outline only for guidance and do not constitute any part of an offer or contract. Intending purchasers should not rely on them as statements of representation of fact, but must satisfy themselves by inspection or otherwise as to their accuracy. No person in this firm's employment has the authority to make or give any representation or warranty in respect of the property.